

Institutional and procedural arrangements of the German National System

Institutional and procedural arrangement of the German National System on Emissions Inventories



Dirk Günther
German Federal Environment Agency

Institutional and procedural arrangements of the German National System

Content:

- Emissions reporting in Germany
- Institutional arrangements under-pinning the German national system on emissions inventories
- The Inventory Planning, Preparation and Management
- Trends of GHG in Germany

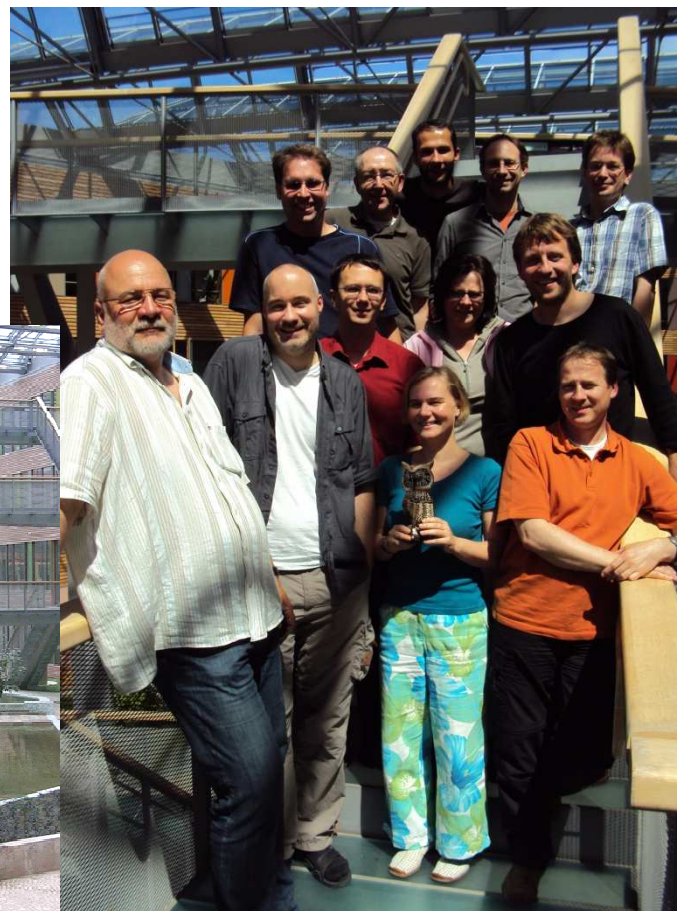
Institutional and procedural arrangements of the German National System

Unit on Emission Situation - The Single National Entity

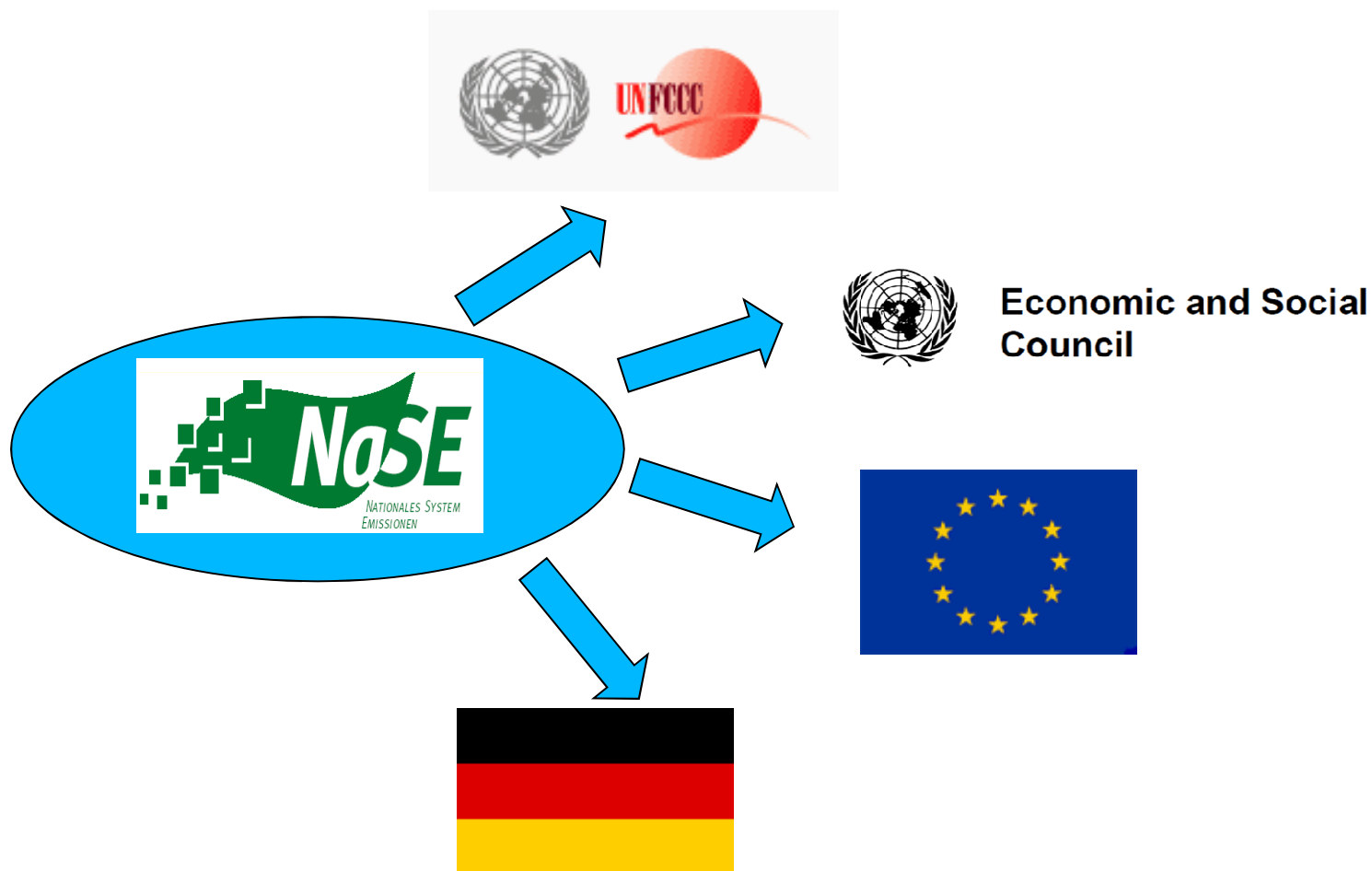
FG I 2.6
Wörlitzer Platz 1
06844 Dessau,
Germany

l2.6@uba.de

**Umwelt
Bundes
Amt** 
For our Environment



Institutional and procedural arrangements of the German National System

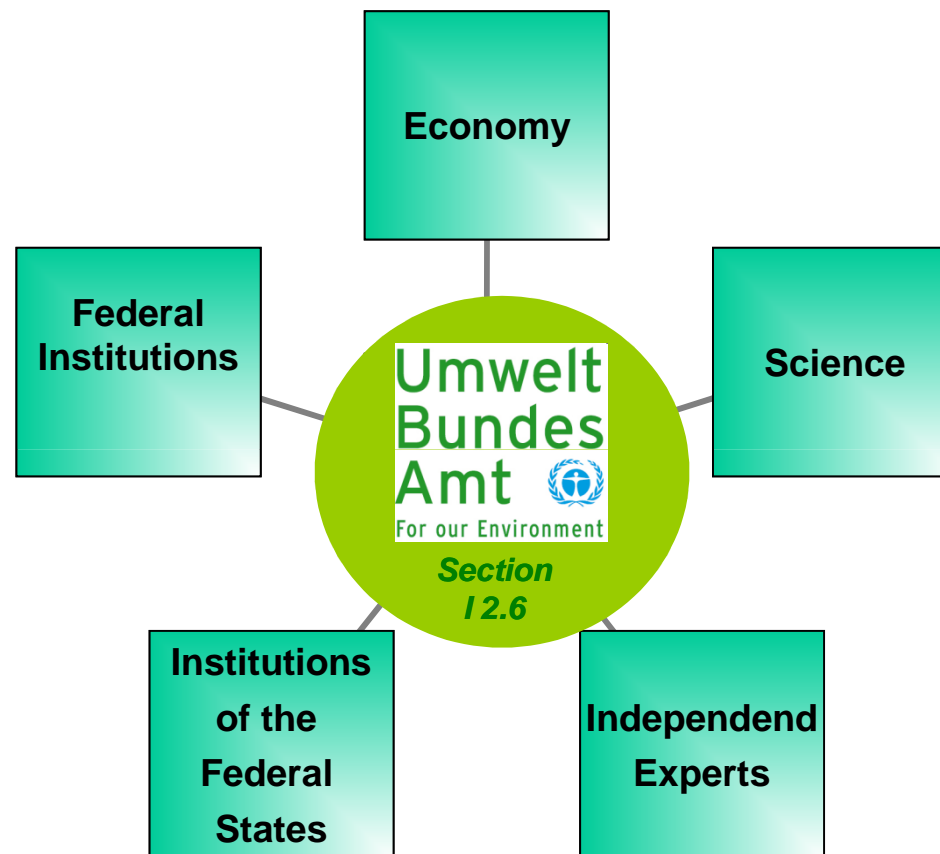


Institutional and procedural arrangements of the German National System

Implementation of Art. 5 (1) KP requirements in Germany

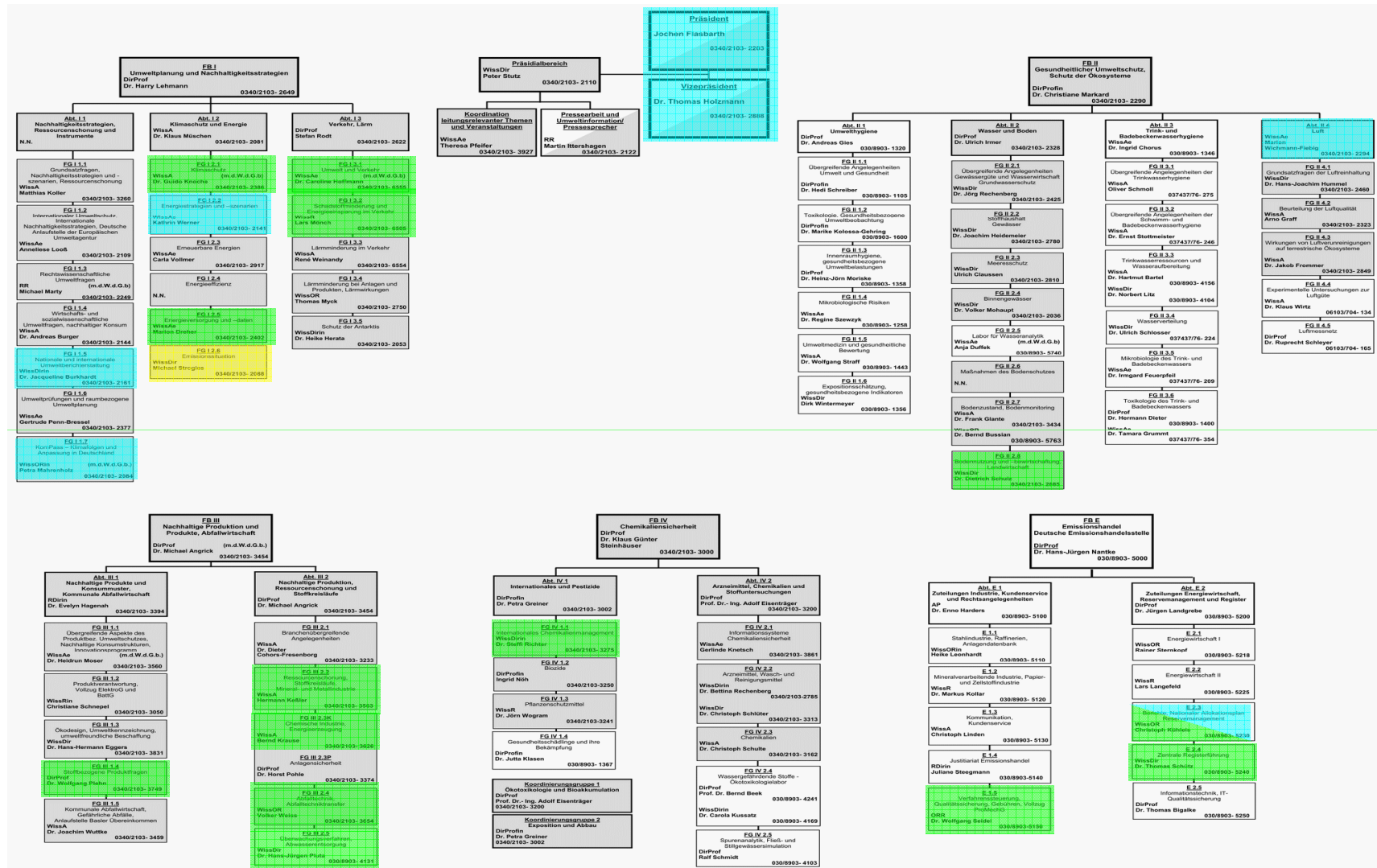
- Country specific implementation of the Kyoto-Protocol
- [Agreement by State Secretaries on the National System](#) in June 2007
- [In-House Directive 11/2005](#) of the Federal Environment Agency
- Agreements of the SNE with other institutions and NGOs

Institutional and procedural arrangements of the German National System



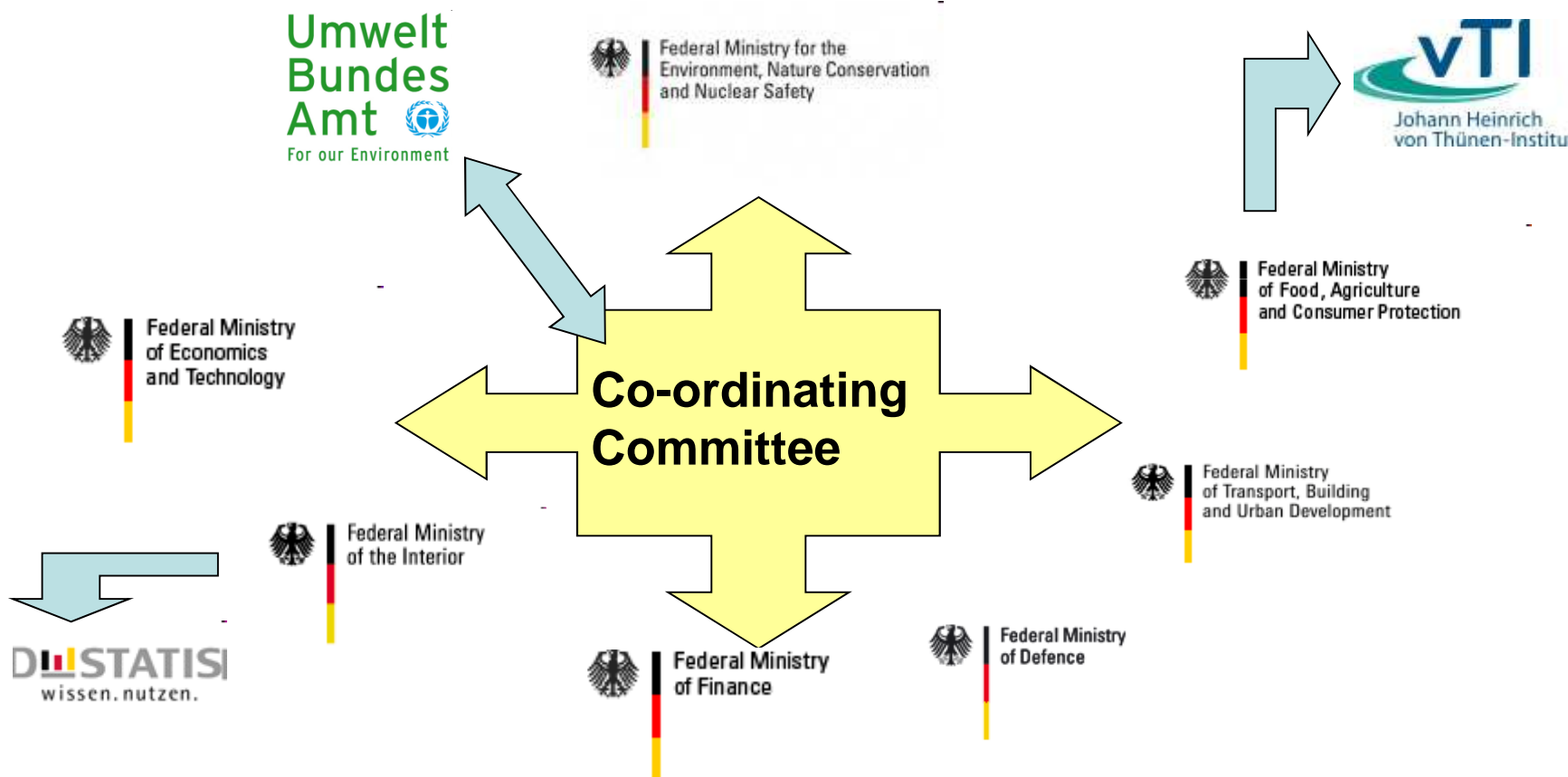
Institutional and procedural arrangements of the German National System

National System on Emissions



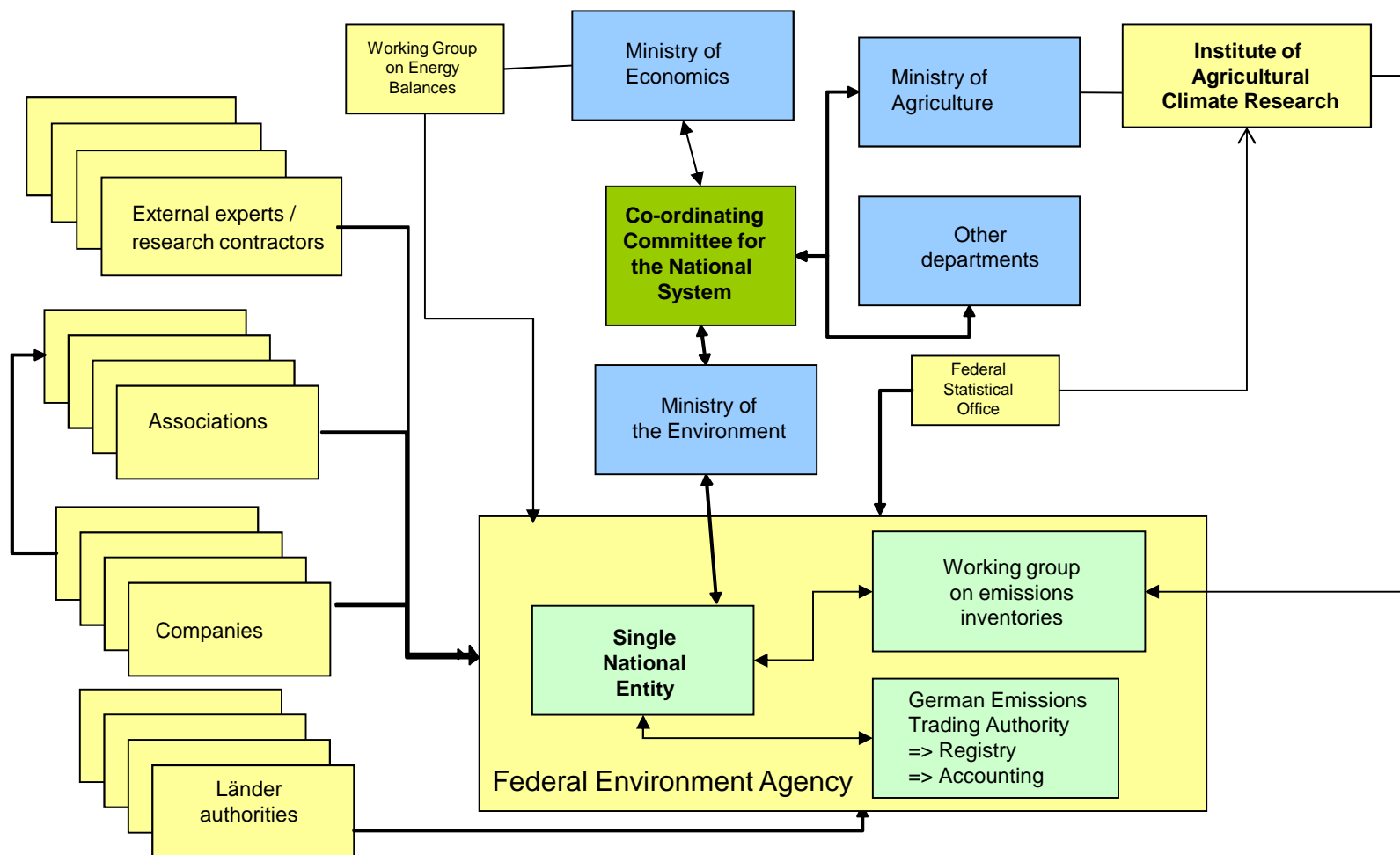
Institutional and procedural arrangements of the German National System

Networking for a successful inventory building - *Agreement By State Secretaries on the National System*



Institutional and procedural arrangements of the German National System

Definition and Allocation of specific responsibilities (Para 12c Annex 19/CMP.1)



Institutional and procedural arrangements of the German National System

3rd SME Relief Act (MEG 3)

- **Problem situation:**
=> No access to confidential data of the Federal Statistical Office
- **Solution:**
 - Legal implementation in a piggyback-method with MEG3
 - Identical changes of three statistical laws
 - Environment Statistics Act
 - Act on Energy Statistics
 - Production Statistics Act

Institutional and procedural arrangements of the German National System

Administrative Agreement with the Federal Statistical Office

- Agreement concretises the relevant provisions of 3rd SME Act
- Determine “new rules” in data handling
=> Transfer of responsibility for statistical confidentiality to the SNE
- Definition of data requirements of the Federal Environment Agency
- Definition of the QA / QS System to be in place at Destatis
- Update of the data requirements on an annual basis

Institutional and procedural arrangements of the German National System

Co-operation agreements with industry

- *Several case specific co-operation agreements with Business Association and enterprises*
- *mainly in the Industrial Processes sector*
- *Enabling reporting according to TIER 3 methods*

Institutional and procedural arrangements of the German National System

Dealing with confidential data

- ***Storage and usage of this data requires special procedures to protect confidentiality and assure completeness of inventories***
 - Strict separation of analysis and enforcement
 - Restricted access to these data
- ***SNE has taken a range of measures to fulfil these requirements***

⇒ **Codification in a concept**

Institutional and procedural arrangements of the German National System

The Single National Entity in Germany

Different roles :

coordination :

National System

QA/QC

Database Management

Report compilation

source category oriented:

Energy (stat., mobile and fugitives)

Industrial processes + solvent use (split over 4 colleagues)

Agriculture + LULUCF (external cooperation)

Waste (-water and disposal management)



Responsibilities of the Single National Entity

- serve as **Central Focal Point** for ALL inventory and reporting issues
- Assure and coordinate **information and data flow**
- Set up **Framework of inventory planning**
- Determine **standards**
- Assure **Central documentation**
- Assure Central **archiving**
- Initiate and assure inventory improvement (**QA/QC**)
- Coordinate inventory issues for **review**

Institutional and procedural arrangements of the German National System

Main working principles...

- **coordination of the multi layer network**
 - **cooperation and communication**
- **centralised system → basically “top down approach”**
 - centralised set for AD multiuse**
- **ensuring T,C,C,C,A (and timeliness)**
 - T(ransparency) – documentation, reports, archiving**
 - C(onsistency) – QA/QC, central data base**
 - C(ompleteness) – QA/QC**
 - C(omparability) – participation in reviews**
 - A(ccuracy) – QA/QC, uncertainty analysis**
- **verification – comparison with other data sources**
 - plant specific information (ETS),**
 - information from “Bundesländer”**
- **research**

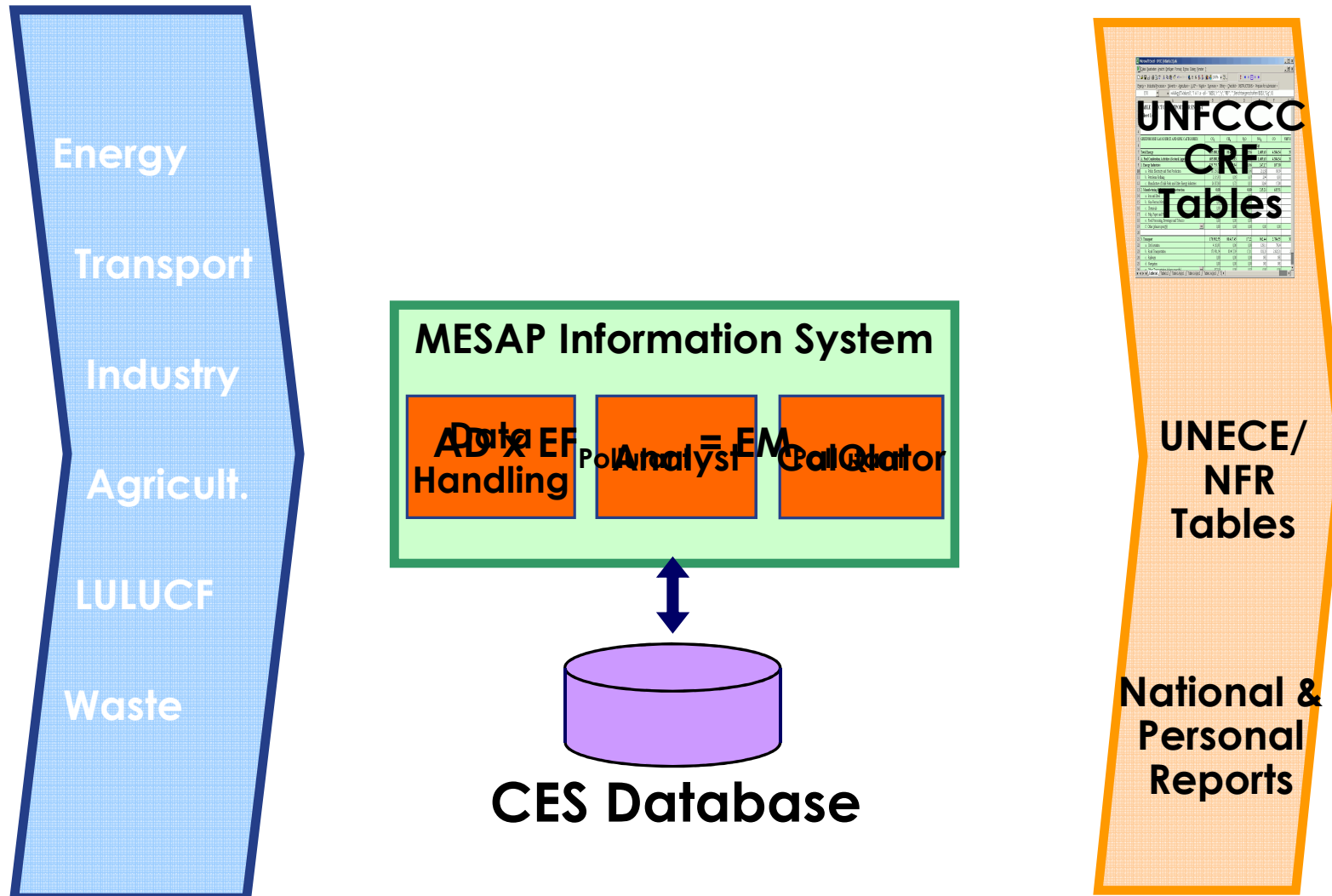
Institutional and procedural arrangements of the German National System

Instruments of the Single National Entity

- ***Central System on Emissions (CSE)***
 - Emissions calculation and –reporting
 - Storage and archiving of all inventory information
- ***Quality System on Emission inventories (QSE)***
 - Implementation of *Good Practice Guidance* for inventories
 - Preparation of a national improvement plan

Institutional and procedural arrangements of the German National System

National System on Emissions



Institutional and procedural arrangements of the German National System

QSE: Quality Control / QC-Plan

Role concept and checklists

- | | |
|---|--|
| <p>1. Source specific expert (FV)</p> <ul style="list-style-type: none"> ➤ Data collection, data entry, estimations and making of NIR texts, QC checks | <p>4. Coordinator for the National Inventory Reporting (NIRK)</p> <ul style="list-style-type: none"> ➤ Compilation of the NIR, Overall QC on NIR texts, QC checks |
| <p>2. QC responsible head of the section (QKV)</p> <ul style="list-style-type: none"> ➤ QC checks on completed data and texts and approval of these | <p>5. Coordinator for the CSE (ZSEK)</p> <ul style="list-style-type: none"> ➤ Maintain the data bank, emission estimation and aggregation |
| <p>3. Source specific contact person (FAP)</p> <ul style="list-style-type: none"> ➤ Mentoring and supervision of FV and QKV ➤ Give assistance on the requirements and on the preparation of data & texts | <p>6. Coordinator for the QSE (QSEK)</p> <ul style="list-style-type: none"> ➤ Maintain and improve the QSE (System, Checklists, IP, QA/QC plan, Handbook) |
| | <p>7. Coordinator for the NaSE (NaSEK)</p> <ul style="list-style-type: none"> ➤ Ensuring institutional arrangements and a timely reporting that is in accordance with the requirements |

QSE: Quality Assurance / QA-Plan

QA-Plan

Consists of QA measures that are implemented in the procedures for annual inventory preparation:

1. Internal QA performed by QKV on FV results (concerning texts and data)
2. External QA (inside UBA) performed by FAP on FV/QKV results (concerning texts, data, QC checks)
3. External QA (inside UBA) performed by NIRK on texts (in general)
4. Internal QA performed by ZSEK on databank (in general)
5. External Review (outside UBA) by staff of different ministries (e.g. Ministry for Environment, Ministry for Economics, Ministry for Food, Agriculture and Forestry) on related topics

Institutional and procedural arrangements of the German National System

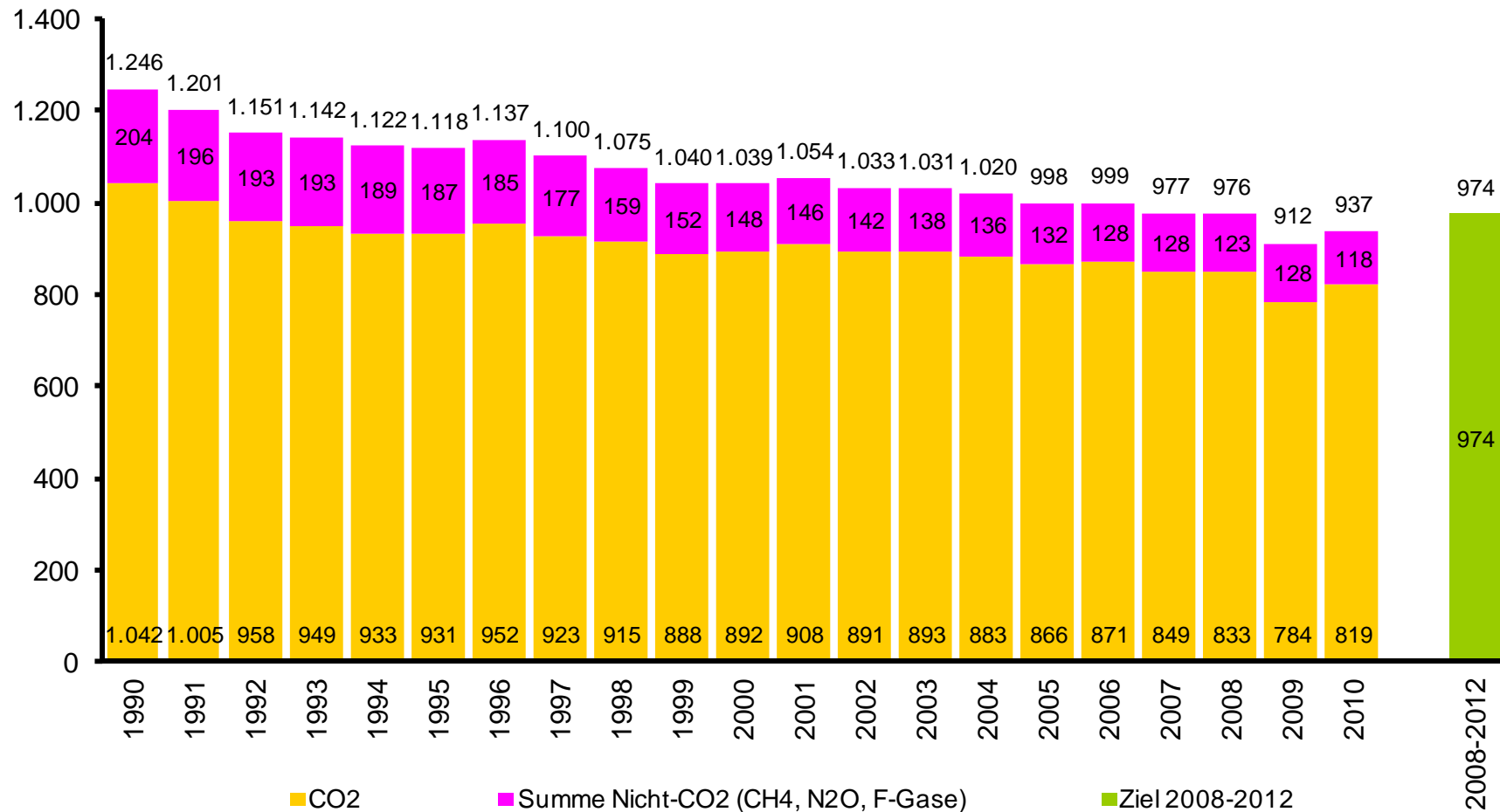
Using Monitoring from EU Emission Trading System (ETS) for verification

- *All EU member states are called upon to use ETS data to improve the quality of their emissions inventories*
- *Use of aggregated data to draw source-category-specific conclusions regarding completeness and consistency of source categories that include installations subject to reporting obligations under the ETS*
- *Data are available in electronic form in the installations database of the German Emissions Trading Authority (DEHSt).*
- *General procedure for individual data queries since 2005*
- *Basis for reviewing EF and verifying AD*

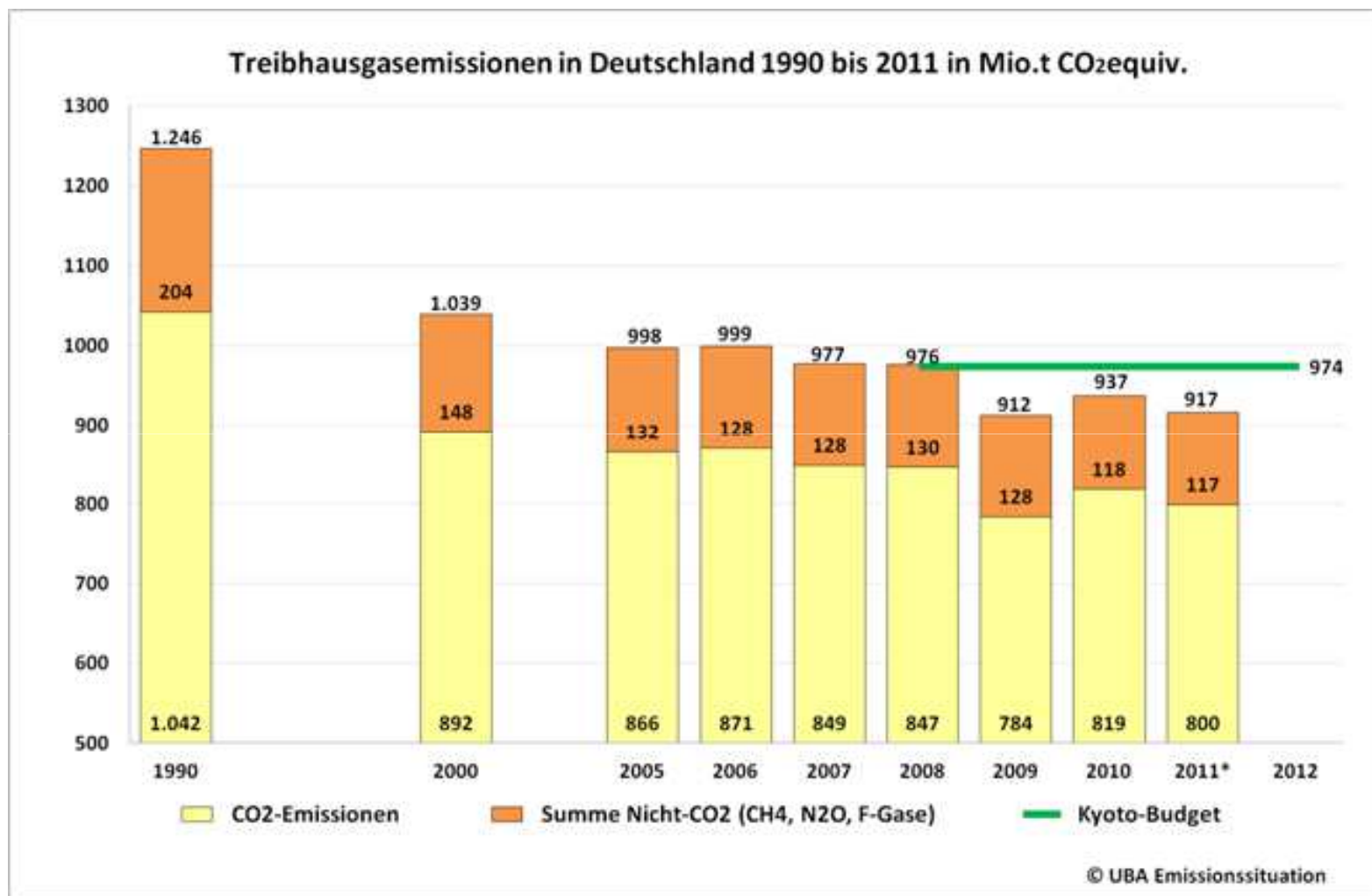
Institutional and procedural arrangements of the German National System

German GHG Emissions: Gases of the Kyoto Protokoll (without CO₂ from LULUCF)

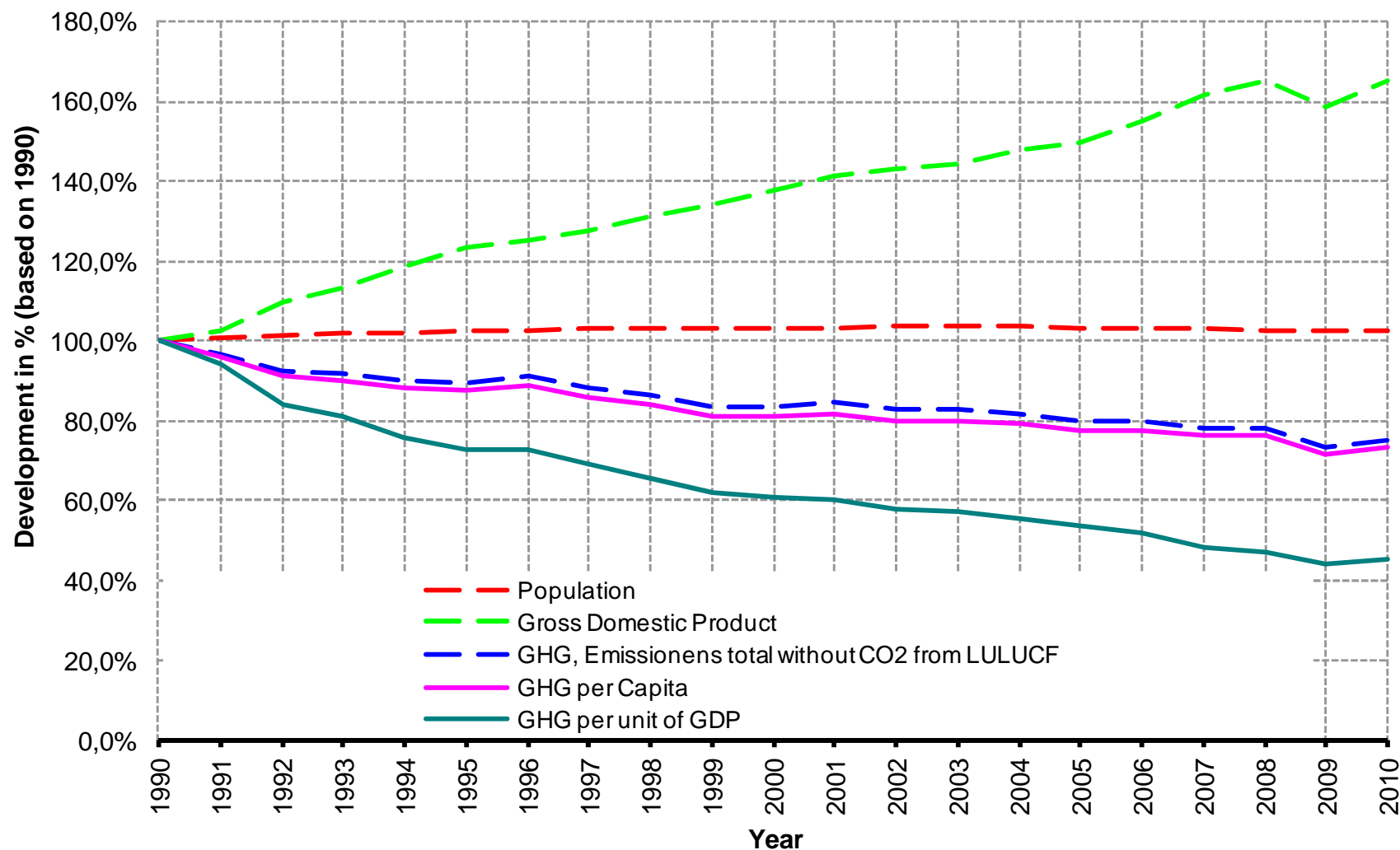
National System on Emissions



Institutional and procedural arrangements of the German National System



Institutional and procedural arrangements of the German National System



Institutional and procedural arrangements of the German National System

Thank you very much for your interest!

Further questions ?